



Technical data sheet

Version: 001/19-82

For: booster pump

Typ 220/2:



Mechanical data:

Width (with piping)	565 mm
Width (without piping)	425 mm
Depth (without piping)	85 mm
Depth (with piping)	155 mm
Total height	124 mm
Height (with piping)	160 mm
total weight	ca. 6 kg

Connections without piping:

Connection thread suction side	G 1/4"
Connection thread pressure side	G 1/4"
Connection thread air drive	G 1/8"

Connections with piping:

Connections suction side	8 S (M16x1,5)
Connections pressure side	8 S (M16x1,5)
Air drive connections	NW 7,2

Pneumatic data:

air drive pL (bar)	4-10 bar
medium	filtered, oil-free compressed air

Performance data:

transmission ratio	1:24
Gas inlet pressure pA min	15 bar
Gas inlet pressure pA max	200 bar
Max permissible outlet pressure pB	300 bar
Displacement	ca. 26 cm ³
Delivery rate per stroke	0,013 l
Formula for gas outlet pressure pB	24 x pL + pA
Compressed air consumption	6 l pro Hub at 6 bar

Noise emission:

Maximum possible sound level <78 dB (A)

Environmental conditions:

Permissible operating temperatures: + 5°C bis max + 45°C

Permissible storage and transport temperatures: + 5°C bis + 60°C

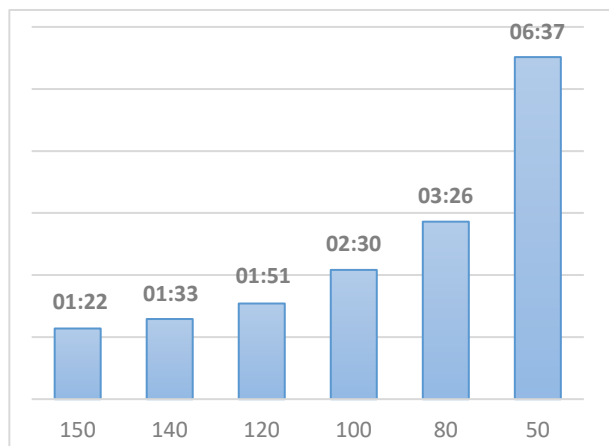
Permitted media: gas

Inert gases
oxygen

We are at your disposal for any questions or further information! We reserve the right to make changes to the design and execution of the products within the framework of the specified technical properties and services. Our general terms and conditions, including product liability, apply exclusively to all products and services provided

220/2 Booster performance data:

Füll-Zeit in Minuten



Constant pressure in bar of the withdrawal bottle pA □

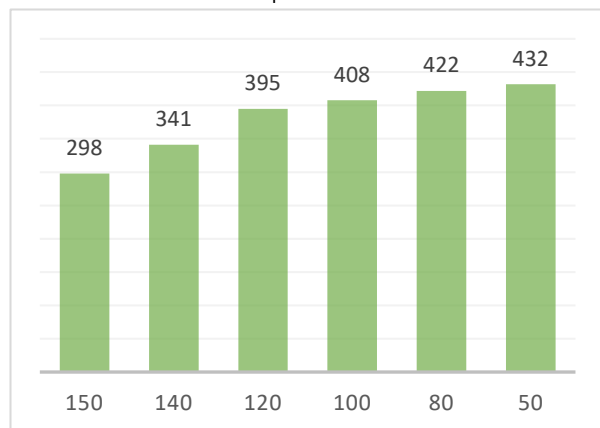
Figure 1: Filling time, booster pump 220-2

Filling time:

Filling time from 150 to 200 bar with a 10 liter volume, measured at a constant 8 bar pL on the air drive.

□ = Time in minutes

Antriebsluftverbrauch in Liter pro Minute



Constant pressure in the withdrawal bottle pA □

Figure 2: Air consumption booster pump 220-2

Air consumption:

Air consumption from 150 to 200 bar with a 10 liter volume, measured at a constant 8 bar pL on the air drive.

□ = Air consumption in liters / minute

We are at your disposal for any questions or further information!

We reserve the right to make changes to the design and execution of the products within the framework of the specified technical properties and services. Our general terms and conditions, including product liability, apply exclusively to all products and services provided